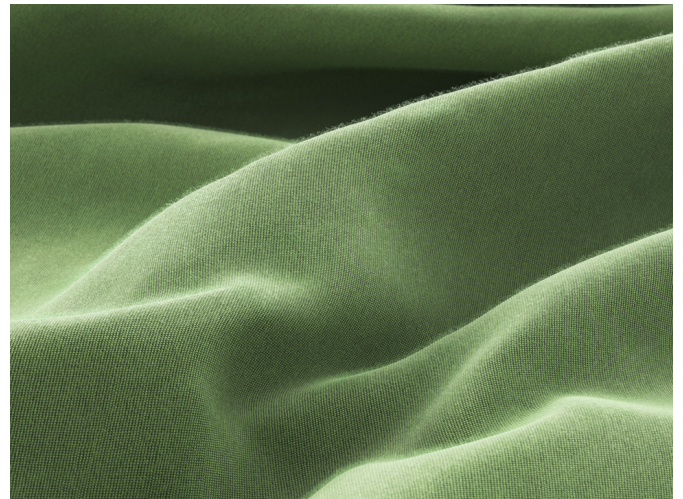


# COLORAMA DIMOUT

- Exclusive Colorama dimout fabric with colour matched reverse for a uniform appearance inside and out
- Cradle to Cradle Certified™ Bronze
- Standard 100 by Oeko-Tex® certified, free from harmful substances
- Washable up to 72°
- Proven acoustic properties

## APPLICATIONS



## FABRIC PROPERTIES

	Dimout
	Polyester
	350 g/m <sup>2</sup>
	0.80 mm
	305 cm
	310 cm

## FEATURES / TECHNICAL PROPERTIES

	5
	Alpha-w = 0.60 / 0.80
	Flame retardant
	Applicable in humid areas
	Fabric must be turned
	Fabric must be turned
	Oeko-Tex, Cradle to Cradle
	Special colours from 240 m

## WASHING INSTRUCTIONS



## FLAME RETARDANT

Class 1 (EN 13773)  
Type B (BS 5867-2)



**Colorama Dimout**
**OPTICAL AND SOLAR COEFFICIENTS (± 5%, DIN EN 410)**

Colour	T <sub>v</sub>	T <sub>s</sub>	R <sub>s</sub>	A <sub>s</sub>	F <sub>c</sub>	g <sub>tot</sub>
<b>408</b>	0.1	0.1	31.3	68.6	0.72	0.52
<b>409</b>	0.0	0.1	18.0	81.9	0.80	0.58
<b>410</b>	0.0	0.1	27.4	72.5	0.74	0.54
<b>411</b>	0.0	0.1	20.9	79.0	0.79	0.57
<b>422</b>	0.0	0.1	23.2	76.7	0.77	0.55
<b>429</b>	0.0	0.1	26.2	73.7	0.75	0.54
<b>446</b>	0.0	0.1	19.7	80.2	0.79	0.57
<b>463</b>	0.1	0.1	29.9	70.0	0.73	0.52
<b>478</b>	0.0	0.1	21.0	78.9	0.78	0.57
<b>479</b>	0.0	0.1	25.3	74.6	0.76	0.55

T<sub>v</sub> Visible light transmission

R<sub>s</sub> Solar reflectance

F<sub>c</sub> Shading factor

T<sub>s</sub> Solar transmission

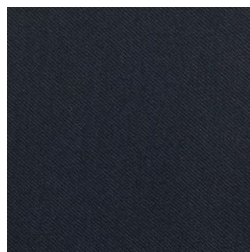
A<sub>s</sub> Solar absorption

g<sub>tot</sub> Total g-value

F<sub>c</sub> + g<sub>tot</sub>: Value calculated with glass: 0.72 / U<sub>g</sub> = 1.6 W/m<sup>2</sup> K, DIN EN 13363-1

**Colorama Dimout**


408



409



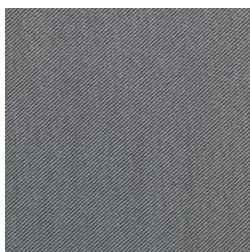
410



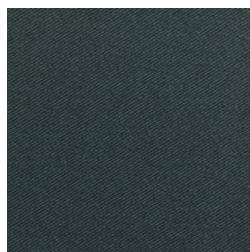
411



422



429



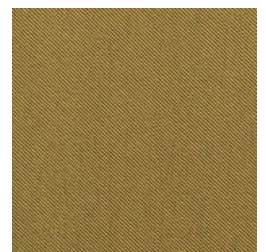
446



463



478



479

Colours shown are not binding