

COLORAMA ACOUSTIC MULTICOLOUR

- Exclusive Colorama Trevira CS fabric woven with acoustic and multicolour yarns for texture and tonality
- Superior acoustic properties which belie its agile appearance
- Standard 100 by Oeko-Tex® certified, free from harmful substances
- Washable up to 60°

APPLICATIONS



FABRIC PROPERTIES

| | |
|---|--|
|  | Transparent |
|  | 92% polyester Trevira CS, 8% polyester |
|  | 140 g/m ² |
|  | 0.40 mm |
|  | 325 cm |
|  | 330 cm |
|  | 330 cm |

FEATURES / TECHNICAL PROPERTIES

| | |
|---|---------------------------|
|  | 6 |
|  | Alpha-w = 0.45 / 0.65 |
|  | Flame retardant |
|  | Applicable in humid areas |
|  | Suitable for Wave |
|  | Oeko-Tex |

WASHING INSTRUCTIONS

| | | | | | | |
|---|---|---|---|---|---|---|
|  |  |  |  |  |  |  |
| | -1% | -2% | -0.5% | | | |
|  |  |  |  |  |  | |
| | -1% | | | | | |
|  |  |  |  |  |  | |

FLAME RETARDANT

Class 1 (EN 13773)
B1 (DIN 4102-1)
M1 (NF P 92-503/5/7)
Type B (BS 5867-2)



Colorama Acoustic Multicolour
OPTICAL AND SOLAR COEFFICIENTS (± 5%, DIN EN 410)

| Colour | T _v | T _s | R _s | A _s | T _{UV} | F _c | g _{tot} |
|------------|----------------|----------------|----------------|----------------|-----------------|----------------|------------------|
| 111 | 44.1 | 43.5 | 51.6 | 4.9 | 15.3 | 0.62 | 0.45 |
| 131 | 37.8 | 38.2 | 42.0 | 19.8 | 11.2 | 0.68 | 0.49 |
| 161 | 33.9 | 34.1 | 37.4 | 28.5 | 9.3 | 0.71 | 0.51 |
| 181 | 31.0 | 30.8 | 29.2 | 40.0 | 7.6 | 0.76 | 0.55 |
| 211 | 43.4 | 43.3 | 48.9 | 7.8 | 14.0 | 0.64 | 0.46 |
| 261 | 34.5 | 34.4 | 34.6 | 31.0 | 9.2 | 0.73 | 0.52 |
| 431 | 34.8 | 38.1 | 41.1 | 20.8 | 9.1 | 0.69 | 0.49 |
| 461 | 32.1 | 36.3 | 38.7 | 25.0 | 7.0 | 0.70 | 0.50 |

T_v Visible light transmission

R_s Solar reflectance

T_{UV} UV transmission

g_{tot} Total g-value

T_s Solar transmission

A_s Solar absorption

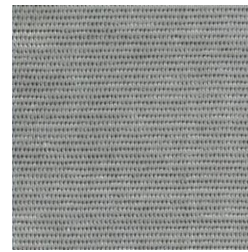
F_c Shading factor

F_c + g_{tot}: Value calculated with glass: 0.72 / U_g = 1.6 W/m² K, DIN EN 13363-1

Colorama Acoustic Multicolour

111

131

161

181

211

261

431

461

Colours shown are not binding