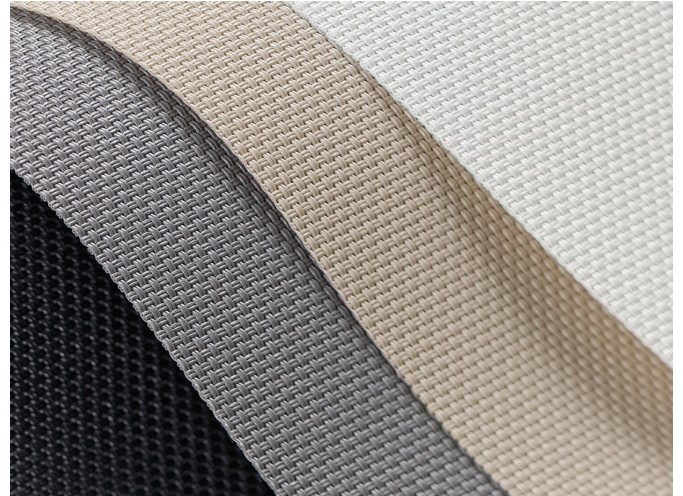


# BASICSCREEN 1%, 5%, 10%







- Screen fabric with superior light control characteristics to minimise glare
- Offered in 3 openness factors to suit all building orientations
- Standard 100 by Oeko-Tex® certified, free from harmful substances
- Greenguard® certification for low-emission products
- Certified mould resistance













## APPLICATIONS



## FABRIC PROPERTIES

	1%	5%	10%
	Semi transparent		
	30% Polyester, 70% PVC		
	480 g/m <sup>2</sup>	410 g/m <sup>2</sup>	340 g/m <sup>2</sup>
	0.65 mm	0.55 mm	0.50 mm
	245 cm		
	250 cm		

## FEATURES / TECHNICAL PROPERTIES

	5-6
	Flame retardant
	Optimised for workstations
	Various openness factors
	Antimicrobial (ASTM - SGS)
	Applicable in humid areas
	Digital printing
	Oeko-Tex, Greenguard
	Special colours from 5'000 m
	Weldable

## WASHING INSTRUCTIONS



## FLAME RETARDANT

B-s2,d0 (EN 13501-1)  
 Class 1 (UNI 9176/77)  
 Type B (BS 5867-2)  
 NFPA 701



**Basicscreen 1%, 5%, 10%**
**OPTICAL AND SOLAR COEFFICIENTS ( $\pm 5\%$ , DIN EN 410)**

Basicscreen 1%							
Colour	$T_V$	$T_S$	$R_S$	$A_S$	$T_{UV}$	$F_C$	$g_{tot}$
<b>3001</b>	16.8	20.9	63.6	15.5	2.5	0.53	0.38
<b>3006</b>	2.4	4.3	20.0	75.7	1.9	0.79	0.57
<b>3007</b>	2.9	2.9	3.3	93.8	2.9	0.90	0.65
<b>3015</b>	9.0	14.9	45.2	39.9	2.2	0.64	0.46

Basicscreen 5%							
Colour	$T_V$	$T_S$	$R_S$	$A_S$	$T_{UV}$	$F_C$	$g_{tot}$
<b>3001</b>	20.3	24.4	60.5	15.1	7.5	0.55	0.40
<b>3006</b>	8.0	10.1	20.3	69.6	7.5	0.80	0.57
<b>3007</b>	7.2	7.2	3.4	89.4	7.2	0.90	0.65
<b>3015</b>	14.4	20.0	43.7	36.3	7.6	0.66	0.47

Basicscreen 10%							
Colour	$T_V$	$T_S$	$R_S$	$A_S$	$T_{UV}$	$F_C$	$g_{tot}$
<b>3001</b>	28.3	32.0	55.3	12.7	14.9	0.59	0.43
<b>3006</b>	16.0	18.3	18.0	63.7	15.3	0.82	0.59
<b>3007</b>	16.3	16.3	3.1	80.6	16.2	0.91	0.66
<b>3015</b>	22.4	27.8	28.5	43.7	14.2	0.76	0.55

$T_V$  Visible light transmission

$R_S$  Solar reflectance

$T_{UV}$  UV transmission

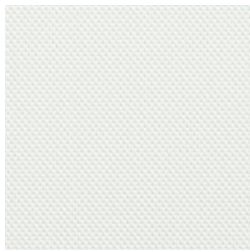
$g_{tot}$  Total g-value

$T_S$  Solar transmission

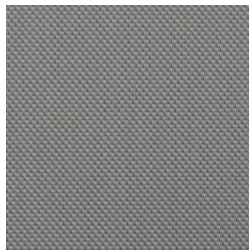
$A_S$  Solar absorption

$F_C$  Shading factor

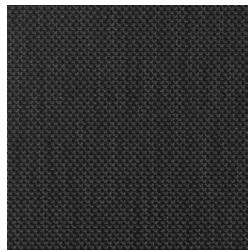
$F_C + g_{tot}$ : Value calculated with glass:  $0.72 / U_g = 1.6 \text{ W/m}^2 \text{ K}$ , DIN EN 13363-1

**Basicscreen 1%, 5%, 10%**

3001 (1%)



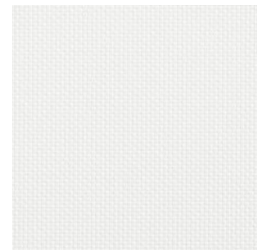
3006 (1%)



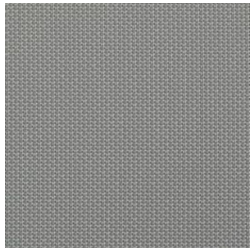
3007 (1%)



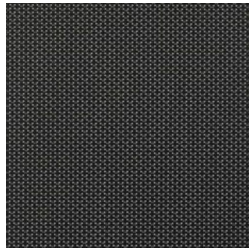
3015 (1%)



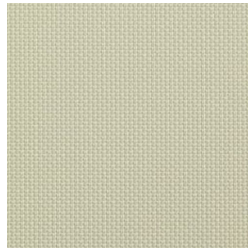
3001 (5%)



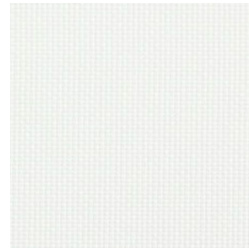
3006 (5%)



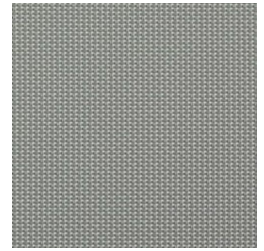
3007 (5%)



3015 (5%)



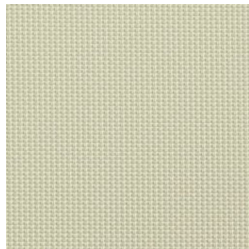
3001 (10%)



3006 (10%)



3007 (10%)



3015 (10%)

Colours shown are not binding