

COLORAMA 1 MULTICOLOUR

- Exclusive Colorama Trevira CS sheer fabric woven with a multicolour yarn for attenuated colour and texture
- Cradle to Cradle Certified™ Bronze
- Standard 100 by Oeko-Tex® certified, free from harmful substances
- Washable up to 72°

APPLICATIONS
























FABRIC PROPERTIES

	Transparent
	Polyester Trevira CS
	130 g/m ²
	0.45 mm
	325 cm
	330 cm
	330 cm

FEATURES / TECHNICAL PROPERTIES

	6
	Flame retardant
	Applicable in humid areas
	Fabric must be turned
	Fabric must be turned
	Oeko-Tex, Cradle to Cradle

WASHING INSTRUCTIONS

							
	-1%	-2%	-2.5%	-0.5%			
							
	-1%			-0.5%			
							

FLAME RETARDANT

B-s1,d0 (EN 13501-1)
 Class 1 (EN 13773)
 Class 1 (UNI 8456)
 B1 (DIN 4102-1)
 M1 (NF P 92-503/5/7)
 Type C (BS 5867-2)
 NFPA 701



Colorama 1 Multicolour
OPTICAL AND SOLAR COEFFICIENTS (± 5%, DIN EN 410)

Colour	T _v	T _s	R _s	A _s	T _{UV}	F _c	g _{tot}
111	42.3	42.1	52.2	5.7	24.8	0.62	0.45
131	36.0	36.9	42.4	20.7	21.8	0.68	0.49
161	33.1	33.7	35.6	30.7	21.0	0.72	0.52
181	29.5	29.6	28.3	42.1	20.4	0.76	0.55
211	42.8	43.2	48.7	8.1	24.4	0.64	0.46
261	33.1	33.2	35.0	31.8	20.5	0.72	0.52
431	32.3	36.6	40.9	22.5	24.1	0.69	0.49
461	31.0	36.0	39.4	24.6	19.0	0.70	0.50

T_v Visible light transmission

R_s Solar reflectance

T_{UV} UV transmission

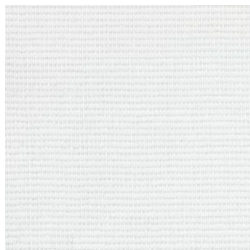
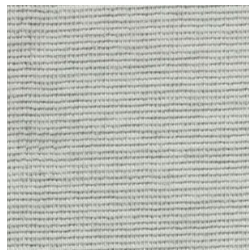
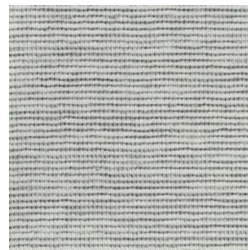
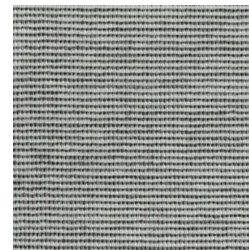
g_{tot} Total g-value

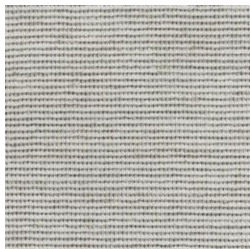
T_s Solar transmission

A_s Solar absorption

F_c Shading factor

 F_c + g_{tot}: Value calculated with glass: 0.72 / U_g = 1.6 W/m² K, DIN EN 13363-1

Colorama 1 Multicolour

111

131

161

181

211

261

431

461

Colours shown are not binding