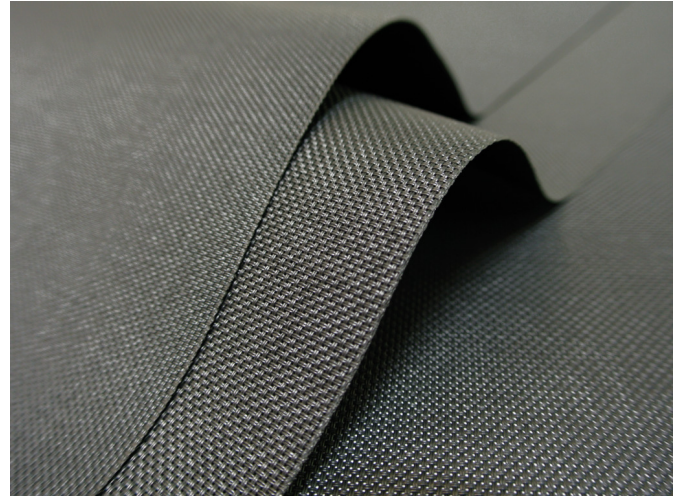


# VERSASCREEN 1%, 2%, 5%, 10%

- Screen-Stoff für ideale Regulierung des Tageslichts und gleichzeitiger Blendschutz
- 4 Öffnungsfaktoren für optimale Lichtkontrolle auf die Gebäudeausrichtung abgestimmt
- Standard 100 by Oeko-Tex® zertifiziert, frei von Schadstoffen
- Greenguard®-Zertifizierung für emissionsarme Produkte
- Auf erhöhte Schimmelpilz-Resistenz geprüft









## ANWENDUNGEN



Nicht geeignet: SG 4905, SG 4900, SG 4907

## GEWEBEHINWEISE

	1%	2%	5%	10%
	Halbtransparent			
	25% Polyester, 75% PVC			
	520 g/ m <sup>2</sup>	510 g/ m <sup>2</sup>	420 g/ m <sup>2</sup>	400 g/ m <sup>2</sup>
	0.70 mm	0.63 mm	0.55 mm	0.55 mm
	← max. → 295 cm			
	8.9 cm, 12.7 cm, 250 cm, 300 cm			

## EIGENSCHAFTEN / TECHNISCHE MERKMALE

	8
	Schwerentflammbar
	Optimiert für Bildschirmarbeitsplatz
	Verschiedene Öffnungsfaktoren
	Antimikrobiell (ASTM - SGS)
	Feuchtraumgeeignet
	Oeko-Tex, Greenguard
	Spezialfarben ab 800 m
	Schweissbar

## PFLEGEHINWEISE



**Versascreen 1%, 2%, 5%, 10%**
**OPTISCHE UND SOLAR-KENNZAHLEN ( $\pm 5\%$ , DIN EN 410)**

Versascreen 1%							
Farbe	$T_V$	$T_S$	$R_S$	$A_S$	$T_{UV}$	$F_C$	$g_{tot}$
001	11.0	15.0	67.0	18.0	0.10	0.50	0.36
003	4.5	7.0	51.0	42.0	0.10	0.60	0.43
401	0.7	3.0	17.0	80.0	0.00	0.81	0.58
901	0.1	0.5	4.0	95.5	0.00	0.89	0.64

Versascreen 2%							
Farbe	$T_V$	$T_S$	$R_S$	$A_S$	$T_{UV}$	$F_C$	$g_{tot}$
001	12.0	16.0	72.0	12.0	1.4	0.47	0.34
003	5.3	9.0	50.0	41.0	1.4	0.61	0.44
401	1.1	3.0	17.0	80.0	0.70	0.81	0.58
901	0.8	1.0	4.0	95.0	1.0	0.89	0.64

Versascreen 5%							
Farbe	$T_V$	$T_S$	$R_S$	$A_S$	$T_{UV}$	$F_C$	$g_{tot}$
001	12.0	20.0	66.0	14.0	6.6	0.51	0.37
003	9.0	12.0	44.0	44.0	5.2	0.65	0.47
401	6.0	5.0	6.0	89.0	4.8	0.88	0.64
901	6.0	5.0	5.0	90.0	7.7	0.89	0.64

Versascreen 10%							
Farbe	$T_V$	$T_S$	$R_S$	$A_S$	$T_{UV}$	$F_C$	$g_{tot}$
001	20.0	24.0	63.0	13.0	6.7	0.54	0.39
003	15.0	19.0	45.0	36.0	8.8	0.65	0.47
401	9.0	11.0	17.0	72.0	9.3	0.82	0.59
901	9.0	9.0	4.0	87.0	9.4	0.90	0.65

 $T_V$  Lichttransmission

 $R_S$  Strahlungsreflexion

 $T_{UV}$  UV-Transmission

 $g_{tot}$  Gesamt g-Wert

 $T_S$  Strahlungstransmission

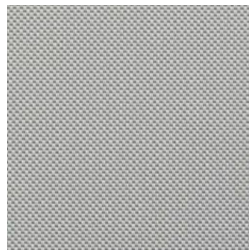
 $A_S$  Strahlungsabsorption

 $F_C$  Abminderungsfaktor

 $F_C + g_{tot}$ : Wert errechnet mit Glas:  $0.72 / U_g = 1.6 \text{ W/m}^2 \text{ K}$ , DIN EN 13363-1

**Versascreen 1%, 2%, 5%, 10%**

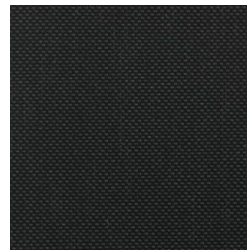
001 (1%)



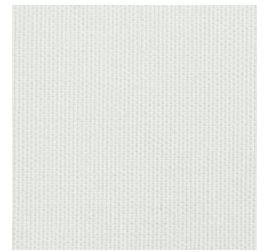
003 (1%)



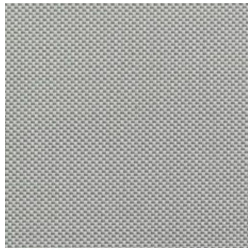
401 (1%)



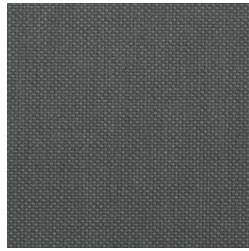
901 (1%)



001 (2%)



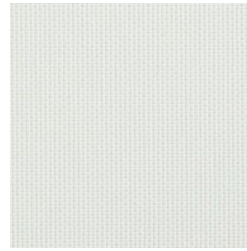
003 (2%)



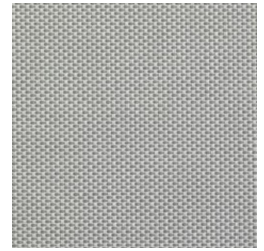
401 (2%)



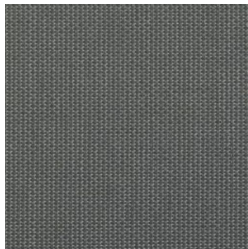
901 (2%)



001 (5%)



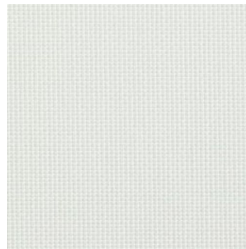
003 (5%)



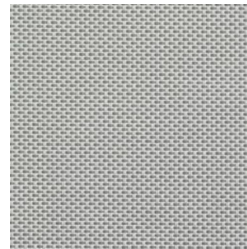
401 (5%)



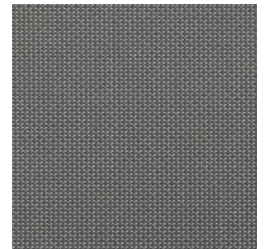
901 (5%)



001 (10%)



003 (10%)



401 (10%)



901 (10%)

Dargestellte Farben sind nicht verbindlich