

COLORAMA 1 MULTICOLOUR

- Exklusiver Colorama Trevira CS Stoff aus mehrfarbigem transparentem Garn für eine besondere Textur und Farbgebung
- Cradle to Cradle Certified™ Bronze
- Standard 100 by Oeko-Tex® zertifiziert, frei von Schadstoffen
- Waschbar bis zu 72°



ANWENDUNGEN























GEWEBEHINWEISE

	Transparent
	Polyester Trevira CS
	130 g/m ²
	0.45 mm
	325 cm
	330 cm
	330 cm

EIGENSCHAFTEN / TECHNISCHE MERKMALE

	6
	Schwerentflammbar
	Feuchtraumgeeignet
	Nur Querverarbeitung
	Nur Querverarbeitung
	Oeko-Tex, Cradle to Cradle

PFLEGEHINWEISE

							
	-1%	-2%	-2.5%	-0.5%			
							
	-1%			-0.5%			
							

BRANDSCHUTZ

B-s1,d0 (EN 13501-1)
 Class 1 (EN 13773)
 Class 1 (UNI 8456)
 B1 (DIN 4102-1)
 M1 (NF P 92-503/5/7)
 Type C (BS 5867-2)
 NFPA 701



Colorama 1 Multicolour
OPTISCHE UND SOLAR-KENNZAHLEN (± 5%, DIN EN 410)

Farbe	T _V	T _s	R _s	A _s	T _{UV}	F _C	g _{tot}
111	42.3	42.1	52.2	5.7	24.8	0.62	0.45
131	36.0	36.9	42.4	20.7	21.8	0.68	0.49
161	33.1	33.7	35.6	30.7	21.0	0.72	0.52
181	29.5	29.6	28.3	42.1	20.4	0.76	0.55
211	42.8	43.2	48.7	8.1	24.4	0.64	0.46
261	33.1	33.2	35.0	31.8	20.5	0.72	0.52
431	32.3	36.6	40.9	22.5	24.1	0.69	0.49
461	31.0	36.0	39.4	24.6	19.0	0.70	0.50

T_V Lichttransmission

R_s Strahlungsreflexion

T_{UV} UV-Transmission

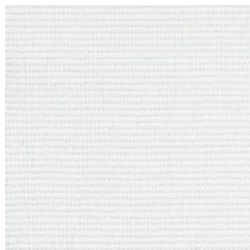
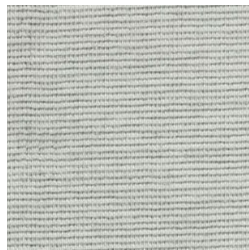
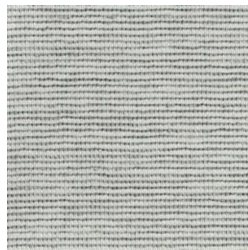
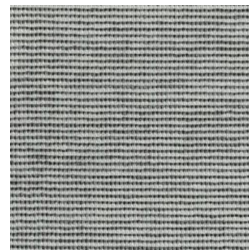
g_{tot} Gesamt g-Wert

T_s Strahlungstransmission

A_s Strahlungsabsorption

F_C Abminderungsfaktor

 F_C + g_{tot}: Wert errechnet mit Glas: 0.72 / U_g = 1.6 W/m² K, DIN EN 13363-1

Colorama 1 Multicolour

111

131

161

181

211

261

431

461

Dargestellte Farben sind nicht verbindlich